

Scenic Treasures

Imprint-Every-Month

This advertising calendar features 12 beautiful photographs from our exquisite national landscape, showcasing scenic treasures from around the country. A right-sized wall calendar with memo squares makes this advertising vehicle a welcome addition for office use or planning family activities at home. And the Imprint-Every-Month insures that your message will keep working day after day.

GENERAL INFORMATION

- **Construction:** 12 pad/picture sheets of high-grade gloss text plus front cover spiral bound with drilled hang hole.
- **Ad Copy Area:** 10" x 1 1/2"; 5-lines of copy printed on each page.
- **Color:** Calendar: As Shown; • **Ad Copy:** Black
- **Shipping Weight:** 280 lbs. per 1000, approximately.

OPTIONAL EXTRAS FOR #1300

- Envelopes (calendars inserted) each 22¢ (G)
- Envelopes with chipboard protector (both inserted) ... each 30¢ (G)
- Extra lines of copy each \$2.50 (G)
- Change of copy (Must be sold as separate order.)
- Additional imprint color (maximum 1 additional): \$24.00 (G) set-up plus 14¢ (G) each running
- Special color match (imprint) each \$19.50 (G)
- Set-up for small halftone photograph (with ad copy) .. \$18.00 (G)
- Set-up for other standard imprint colors ... each \$15.00 (G)
- Other standard colors: 873 Gold, 185 Red, 286 Blue, 281 Blue, 464 Brown, 202 Maroon, 021 Orange, 347 Green, & Process Blue
- Less than minimum charge (Absolute minimum: 50 pcs.) ... \$30.00 (G)
- Combined quantity pricing Not Available

SIZE: Open: 10 7/8" x 17"; Closed: 10 7/8" x 8 1/2"

#1300 APPOINTMENT



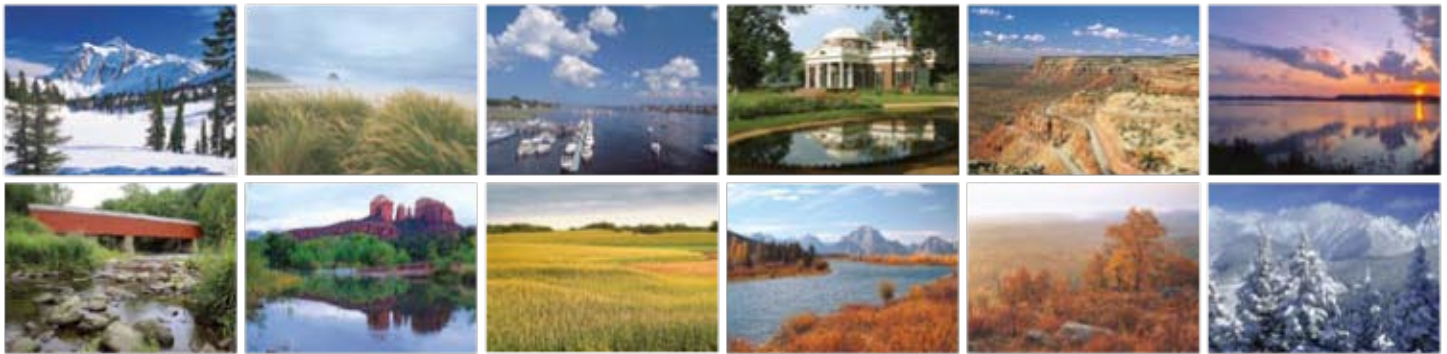
MAQUOKETA CREDIT UNION

229 6th Street, Maquoketa, IA 52060
voice: 319-555-8873 • fax: 319-555-8866
www.maquoketacreditunion.web

SUN	MON	TUE	WED	THUR	FRID	SAT
						1
2	3	4	5	6	7	8
9	10	11	12	13	14	15
16	17	18	19	20	21	22
			26	27	28	29



The beautiful full-color front cover makes a great first impression.



Special features for products on this page. For information regarding them see page 92.



PRODUCT PRICING FOR #1300

Quantity	100	250	500	750	1000	2500	5000
price each before 5/31/2010	3.93	3.31	3.03	2.92	2.56	2.31	2.20
price each after 5/31/2010	4.37	3.68	3.37	3.24	2.84	2.57	2.44

For additional options, general information & art requirements see pages 92-96.